

Brownfield Re-development

Cuoco & Cormier Engineering Associates, Inc. has created a variety of innovative designs which have allowed developers to successfully re-vitalize and re-use impaired properties. Sample projects include:

Eagles Landing - Tewksbury, Massachusetts:

C&C prepared site plans and permits to transform the former TewMac Airport, an aging private airport, into a vibrant commercial, residential and recreational development. The center piece of the project was the construction of the Tewksbury Country Club with a 9-hole golf course, luxury banquet facility and club house. The club has been complimented by the construction of a gated community consisting of 176 single family homes which surround the course.



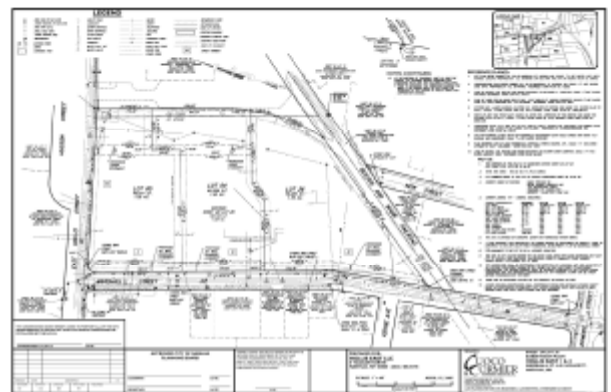
Ballardvale Crossing - Andover, Massachusetts:

C&C worked with the developer and the community to craft a design that enabled 68 high end residential condominiums to be constructed at this former mill facility. Fire and decay had caused the site to become an eye sore. A village concept was created to blend the project into the historic setting of Ballardvale while also maintaining pedestrian access to local open space. This approach enabled our client to collaborate with the community to address local housing needs while also maintaining the character of the neighborhood.



Beebe Rubber Site - Nashua, New Hampshire:

Where 2 other design teams failed, C&C succeeded in developing engineering and management controls that enabled the developer to gain state and local approval to construct a mixed residential and commercial development at this Brownfield site. The site design incorporated a combination of control measures to contain contaminants and prevent human contact. C&C has also prepared a New Hampshire Brownfield's Indemnification package which enables the developer to work with the New Hampshire Department of Environmental Services to reduce his long term liability. This process has rendered the site more appealing to re-development and re-vitalization.



Nashua, NH:
74 Northeastern Blvd - Unit 10A
Nashua, NH 03062
(603) 882-1812

Tewksbury, MA:
170 Main Street, Unit 112
Tewksbury, MA 01876
(978) 851-9807

Boscawen, NH:
166 King Street
Boscawen, NH 03303
(603) 796-6000